

# DXF Import Filter (Module IMPDXF)



## General

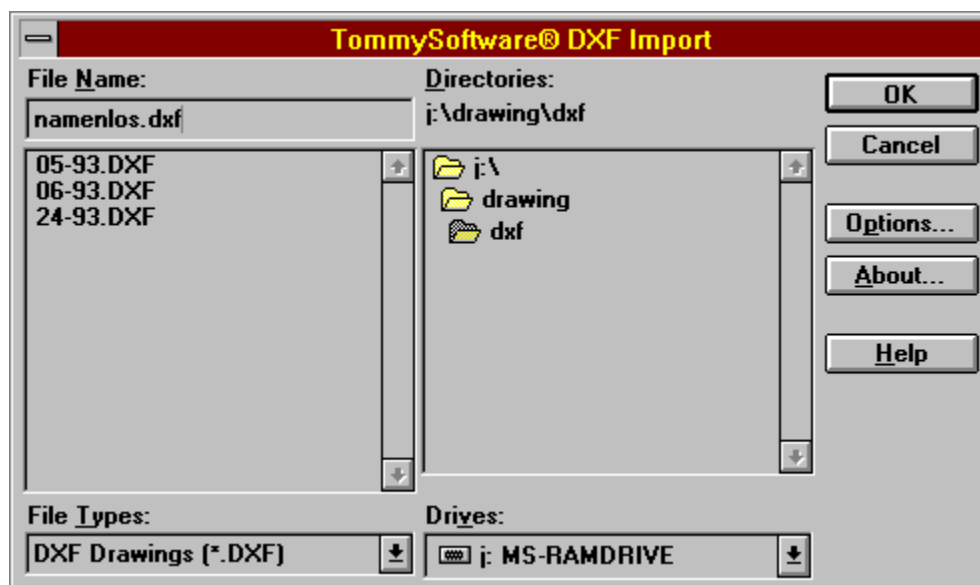
When importing a DXF file, all relevant definitions of line patterns, layers and blocks (including their attributes) are maintained. The names of these objects stay unchanged.

As the TVG 4.0 format can only handle two-dimensional data at the moment, the Z-coordinates supplied to any other object will be ignored. Objects that are pure 3-D-objects will be converted into equivalent 2-D-objects.



Texts within DXF files are translated into standard text objects. Different font styles will not be translated, any text will use the standard font.

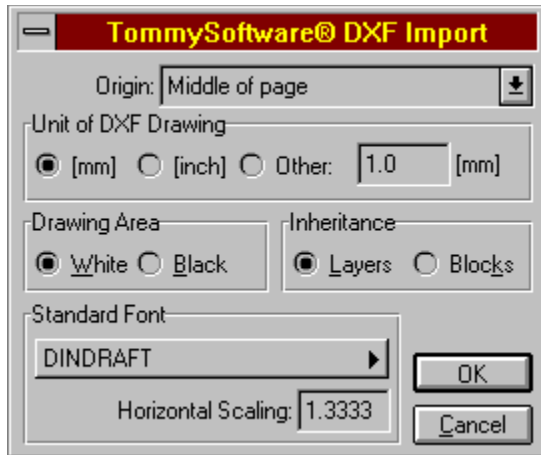
## File Selection

To access an explanation of an individual element in the dialog box shown below, click the left mouse button on the element. Explanations are available whenever the mouse pointer changes from an arrow (  ) to a hand (  ).



## Options

To access an explanation of an individual element in the dialog box shown below, click the left mouse button on the element. Explanations are available whenever the mouse pointer changes from an arrow (  ) to a hand (  ).



**TommySoftware®**

**North America, Inc.**

130 Barrow Street  
New York, NY 10014  
U. S. A.

Phone (212) 807 9720  
Fax (212) 807 8149  
CompuServe 100020,3647

Internet "tommy@tommysoftware.com"

**Germany**

Selchower Straße 32  
D-12049 Berlin  
Germany

Phone +49 30 621 5931  
Fax +49 30 621 4064  
CompuServe 100142,3665

Clicking on this button will close the dialog accepting all changes. Any changes or operations specified will be carried out.

Clicking on this button will close the dialog, without accepting any changes. Any following operation will not be carried out.

This text shows the path of the directory whose contents are shown in the file list. This path is always shown in front of the file name in the "Name" field.

The name of the file to be used is entered in this field. If there is a file in the list whose name begins with the character entered, this file is put at the top of the list.

The extension for the files to be displayed can be selected from this list. There are usually only two or three file extensions available. If a standard ending (DXF) is chosen, it is forced. This means that the chosen ending is applied to all files.

For example, if a drawing file called `MYFILE` is entered, the extension DXF will be used, the resulting file will be called MYFILE.DXF.

All the files in the current directory with the specified extension are shown in this list. Clicking once on a filename puts that name in the "Name" field, where it can be changed. Double-clicking on a file name selects that file and closes the dialog as if the "OK" button had been clicked on



All the sub-directories in the current directory are shown in this list. Double-clicking on a directory name will open or close that directory.

All available disk drives are shown in this list. Selecting a disk drive name makes that drive the active drive, and the path shows current root directory of that drive.

Clicking on this button displays brief information about this filter.

Clicking on this button allows to edit the options for the current file operation.

Clicking on this button display the help text for this dialog window.

Clicking on this button accepts the current file name. If a standard ending has been chosen from the list of extensions (DXF) this is forced. This means that the file will use the selected extension, whichever extension is entered.

The program checks whether the file already exists. If the file to be loaded does not exist, then an error message appears and the dialog remains open. If a file with the same name as the one to be saved already exists, a message appears and you can choose whether or not to overwrite the existing file.

Clicking on this button will close the dialog, without loading or saving a file.

In this list, the position of the DXF drawing in relation to the current drawing can be chosen.



If this radio box is selected, the DXF drawing assumed to be based on Millimeter unit.

If this radio box is selected, the DXF drawing assumed to be based on Inch unit.

If this radio box is selected, the DXF drawing assumed to be based on the unit given in the edit box in millimeters.

Enter here the custom unit in millimeters that the DXF drawing shall be assumed to be based on.

If this radio box is selected, the DXF drawing will be converted for a white drawing background, i.e. objects having the color 7 will be displayed in black.

If this radio box is selected, the DXF drawing will be converted for a black drawing background, i.e. objects having the color 7 will be displayed in white.

If this radio box is selected, the import filter will prefer inheritations using the BYLAYER mode. Since the DXF format uses another method of inheritance than TVG 4.0 does, some problems may occur. If so, try the alternate setting.

If this radio box is selected, the import filter will prefer inheritations using the BYBLOCK mode. Since the DXF format uses another method of inheritance than TVG 4.0 does, some problems may occur. If so, try the alternate setting.



This button displays the font that will be assigned to all texts that are imported from the DXF drawing. Clicking on this button shows a dialog window that allows the selection of a different font.

Enter here the horizontal scaling that shall be applied to all texts that are imported from the DXF drawing.



